

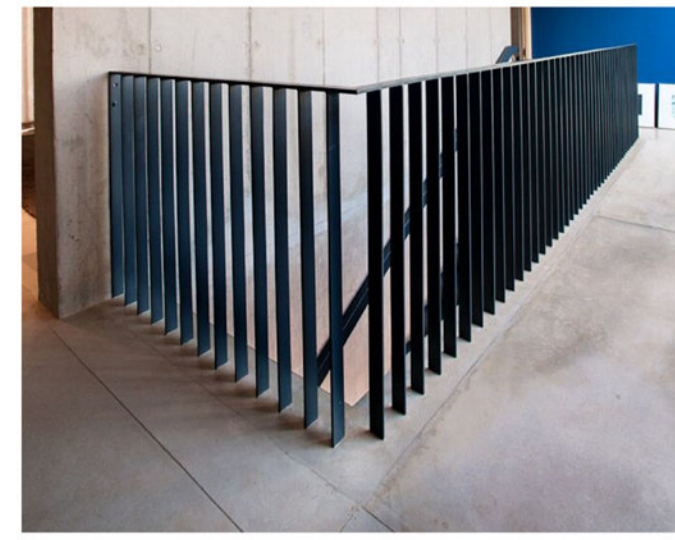
GL-1 FRAMELESS GLASS HAND-RAILS TO BALCONIES



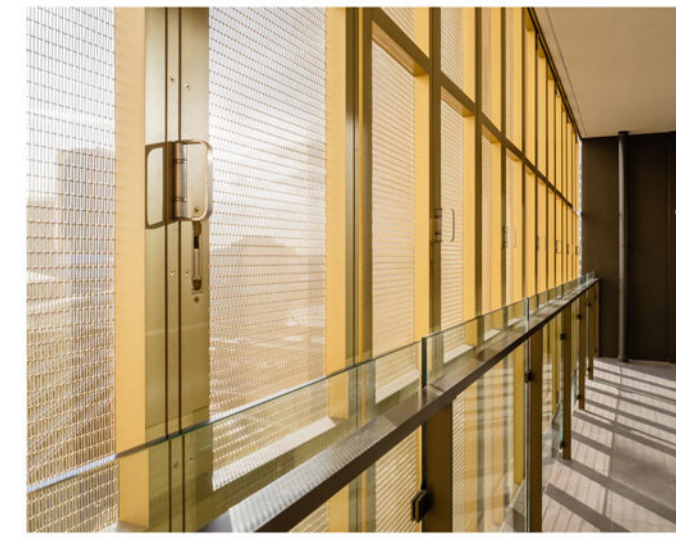
ST-1 BLUE STONE TO BASE WALLS



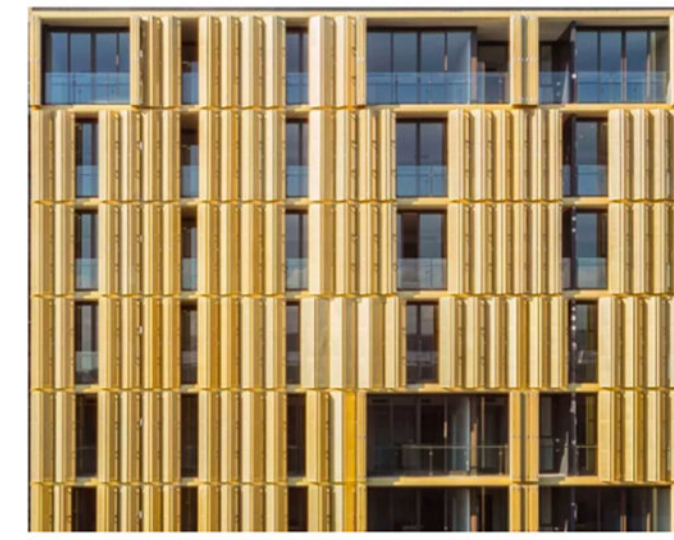
ST-2 SANDSTONE BASE WALLS TO GROUND LEVEL



TM-1 BLACK BALUSTRADES AND GATES TO GROUND LEVEL



TM-2 OPERABLE GOLD SCREEN TO HOTEL FACADE



TM-2 OPERABLE GOLD SCREEN TO HOTEL FACADE



TW-1 POLISHED OFF WHITE PRE-CAST WITH A CREAM TINT TO EXTERNAL WALLS



WT-2 BLACK PROFILED METAL CLADDING TO ACCENT AREAS



PENTLAND ELEVATION



ANZAC PARK EAST ELEVATION

ELEVATIONS - PENTLAND & ANZAC PARK EAST

SECTION 131
51 CONSTITUTION AVENUE, CAMPBELL, CANBERRA

FRONT.